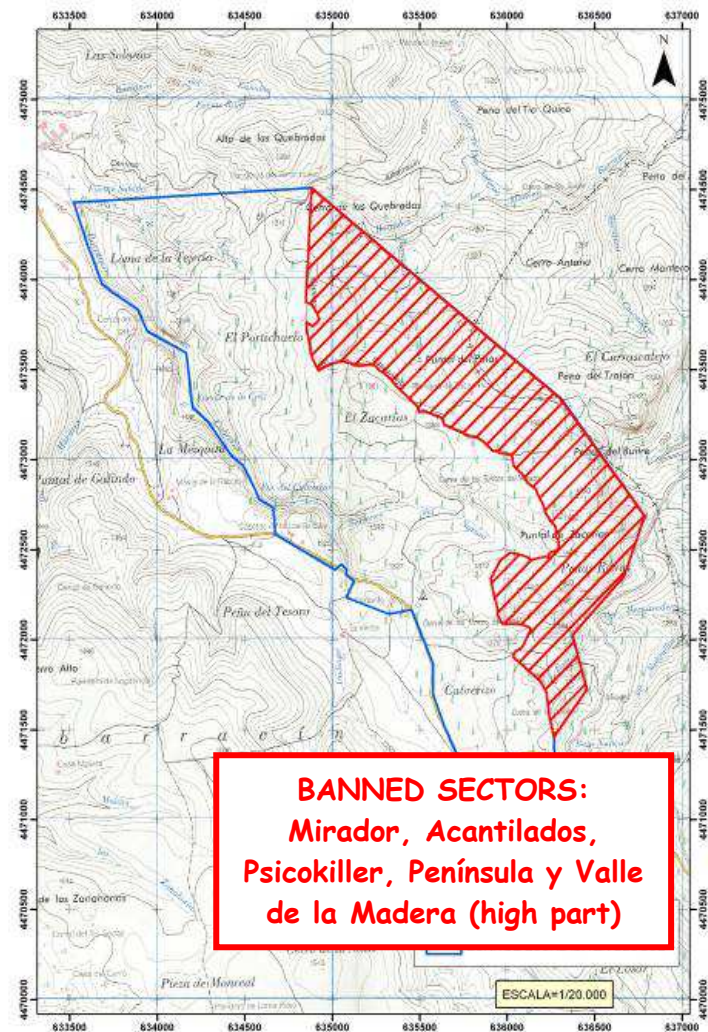
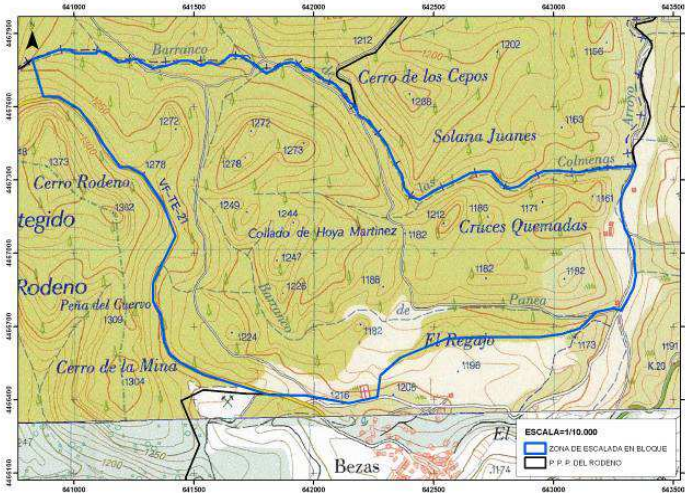




ALLOWED
BEZAS' AREA

BANNED
(DUE TO PROTECTED SPECIES
CONSERVATION)

GUIDELINES AND RULES FOR
CLIMBING IN THE RODENO'S PINE
FOREST PROTECTED LANDSCAPE



BANNED SECTORS:
Mirador, Acantilados,
Psicokiller, Península y Valle
de la Madera (high part)



English

PEÑAS ROYAS'
CLIFFS

The Rodeno's Pine Forest Protected Landscape was officially created in 1995, in order to protect its natural values and landscape. This landscape is characterized by pine trees growing in the cracks of the red sandstone rock and by a diversity of landforms. Moreover, outstanding sets of levantine cave art can be visited.

Conservation of this protected area depends on all of us. Therefore there are some rules and guidelines that will allow us keep enjoying its great natural values.

Bouldering is regulated to avoid disturbing the wildlife and damage on rocks.

Rules are compiled in Rodeno's Pine Forest Protected Landscape management plan (Decree 187/2014, 18th November, Government of Aragon).

ALLOWED

NAVAZO'S AREA



Camping: Any kind of camping is prohibited. The surrounding villages offer a variety of accommodation.



Parking regulation: Parking is only permitted in car parks. Parking is allowed 24 hours a day in "La escombrera" and "Centro de interpretación de Dornaque"; in the rest of car parkings only between 7 and 22 hours.



Vehicles: You can drive motor vehicles only and exclusively on paths included in General Use Areas. Attend to signposts.



Fire: Campfires are banned. If you see smoke or any other sign of danger, please call 112. It is free and they would attend any emergency.



Litter: Please, do not leave your rubbish. Put it in a dumpster or paper bin.



Pets: To avoid disturbing the wildlife and damages to flora, dogs must be on a lead.



Cave art: Cave paintings and engravings are part of our past heritage; please don't vandalise them.



➤ **Sport climbing and other styles of climbing that need permanent anchors fixed to the rock, or to place any gear required to protect against falls, are banned.**

➤ **Bouldering is allowed only at Navazo and Bezas areas (see maps). In these areas, climbing is forbidden on rocks visible from paved forest path Albarracín-Dornaque and 30 m around the shelters with cave paintings.**

➤ **Bouldering can be practiced only and exclusively one hour before sunrise and one hour after sunset.**

➤ **To use magnesium or any other product that paints rocks, as well as tick marks, are prohibited.**

